

# Atlanta Safety Tips

TRAVEL SMART

1



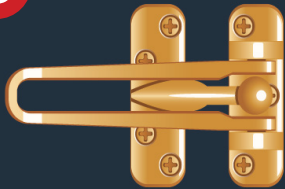
Do not answer the door in a hotel or motel room without verifying who it is. If a person claims to be an employee, call the front desk and ask if someone from their staff is supposed to have access to your room and for what purpose.

2



When returning to your hotel or motel late in the evening, use the main entrance of the hotel. Be observant and look around before entering parking lots.

3



Close the door securely once you enter your room and use all of the locking devices provided.

4



Do not needlessly display guestroom keys in public.

5



Place all valuables in the hotel or motel's safe deposit box.

6



Remove convention badges outside of meeting site.

7

## Clean Car Campaign



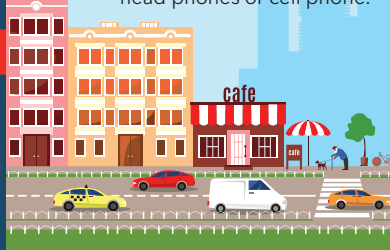
### ATTENTION!

#### DO NOT LEAVE VALUABLE ITEMS IN VEHICLES IN PLAIN SIGHT

- Laptop Computers
- MP3 Players
- Loose Change
- Bags or Boxes
- Purses or Wallets
- Cell Phones or Chargers
- Cameras
- GPS Devices

8

When walking, stick to well-lit, busy areas; walk with a purpose. Don't be distracted by use of your head phones or cell phone.



9



Do not give money to panhandlers. NOTE: monetary solicitation is illegal in the downtown convention area.

10



Need directional assistance downtown? **Call an Ambassador @ 404-210-9600 or send a text to 404-732-4200**

11



Always make note of the driver's name and license plate number of the car you are using.

12



See Something, Say Something  
Text 404.344.5355

13



ATLANTA STREETCAR  
Stay alert near street car tracks.

## EMERGENCY NUMBERS

### EMERGENCY ASSISTANCE

911

### CITY OF ATLANTA

**Police:** 404-614-6544

**Fire:** 404-546-7000

## USEFUL INFORMATION

### The Ambassador Force of the Downtown Improvement District

The Ambassador Force of Atlanta provides an added layer of security and directional assistance in the convention area. Ambassadors will provide an escort to visitors walking to destinations within the district. If you need an escort call the Field Office at 404.215.9600 or send a text to 404-732-4200 and give your name and location to the dispatcher and a member of the Ambassador Force will respond, or visit their Visitor Information kiosk at the corner of Peachtree St. and Andrew Young International Blvd.

### Closest Hospitals

Grady Memorial Hospital  
80 Jesse Hill Jr Drive SE  
Atlanta, GA 30303  
Main: 404.616.1000

Emory University  
Hospital Midtown  
550 Peachtree Street NE  
Atlanta, GA 30308  
Main: 404.686.4411

### Nearest Pharmacy

CVS  
235 Peachtree Street NE  
Atlanta, GA 30303  
Main: 404.577.4054

### Parking Resources

Visit [www.atlantadowntown.com](http://www.atlantadowntown.com) for an interactive map and list of downtown parking areas.

# Atlanta Safety Tips

## TRAVEL SMART

### Rideshare & Taxis



In addition to taxi service and major car rental companies, rideshare apps connect riders with drivers via a free mobile app. Verify your driver's identity: When you request a ride, the rideshare app provides the driver's name, photo and license plate number. Before you get into a car, check the license plate and make sure the driver matches the photo.

**Rideshare:** For Hartsfield-Jackson Atlanta International Airport: Rideshare pickups occur in the North Economy lot. Passengers will proceed through North baggage claim for access to the lower-level escalators located between doors N2 and N3. Once downstairs, follow the orange signs to the Economy lot and request a ride only after arrival at the pickup location. More information can be found [here](#).

**Taxis:** There are a few ways to catch a ride when moving around Atlanta. Before hailing a taxicab, it's good to know that both flat and meter rates are available, depending on the location. There are flat rates to and from Hartsfield-Jackson International Airport and within neighborhoods in the Atlanta Business District, including Downtown, Midtown and Buckhead. Outside of these districts, Atlanta taxi rates are based on meter rates.

- Taxis are available 24/7.
- Most are already parked outside hotel lobbies for your convenience.
- This also applies to Hartsfield-Jackson Atlanta International Airport, where drivers are waiting in the designated taxicab service area. Taxi pick up at the airport.

Atlanta is accessible via Interstates 20, 75, 85 and Georgia 400. I-285 forms a beltway around the city. Last-Mile Mobility options such as Relay Bike Share and scooters (BIRD, VeoRide, Spin and Helbiz) are located in various areas of the city. Simply download an app, locate the transportation mode, and unlock it from the app.

Call (404) 614-6514 and request an enforcement officer.

### Marta-Metro Atlanta Rapid Transit Authority



Catch MARTA first. With direct train service from Hartsfield-Jackson Atlanta International Airport, MARTA is your efficient, no-hassle connection to most major destinations around town. Visit [www.itsmarta.com](http://www.itsmarta.com) for a detailed schedule and rates.

Over 300 MARTA Police officers work to provide a safe and secure system for the community.

Now you can reach MARTA Police via text - (404) 334-5355. This SMS service is in addition to MARTA's free See & Say app for iOS and Android users.

MARTA Police can also be reached by phone at (404) 848-4911.

### Atlanta Streetcar



Atlanta's Streetcar transports riders on a 2.7-mile track that connects Atlanta's convention and entertainment district at Centennial Olympic Park to the Martin Luther King Jr. National Historical Site just east of the city. The streetcar puts visitors just a short ride away from more than 300 restaurants, downtown hotels, and top venues and attractions.

<https://www.itsmarta.com/streetcar.aspx>

The Atlanta Streetcars are large vehicles powered by an overhead electrical system - which means they are very quiet when operating.

Stay alert and be aware of your surroundings when near Streetcar tracks and intersections - always STOP, LOOK, and LISTEN before crossing the street.

A Streetcar traveling at 20 miles per hour takes almost 60 feet to stop.

Do not run in front of an approaching Streetcar.

Step over tracks to avoid catching heels or wheels in the track gap.

Streetcar stops may be located on the side of the street or at a center island in the middle of the roadway.

When heading to a stop:

- Use designated crosswalks.
- Obey walk signals.
- Look both ways.
- Keep children close.